



FOX UP

DECENTRALIZED VENTILATION UNIT WITH HEAT RECOVERY FOR INDIVIDUAL ROOMS

Thanks to its easy mounting through the external wall, without need of extra air ducts, the Fox Up decentral ventilation unit with heat recovery is the perfect solution for renovation projects.

// Decentralized ventilation unit with heat recovery for individual rooms

PRINCIPLE OF OPERATION

The unit will change every 70 seconds from extract to supply mode. When polluted air is extracted from the room, the airflow will transfer its heat as it passes through the ceramic heat exchanger. In the supply mode, fresh outside air will be heated up as it passes through the heat exchanger.

To ensure a balanced air-flow, the Fox Up units need to be installed in pairs.

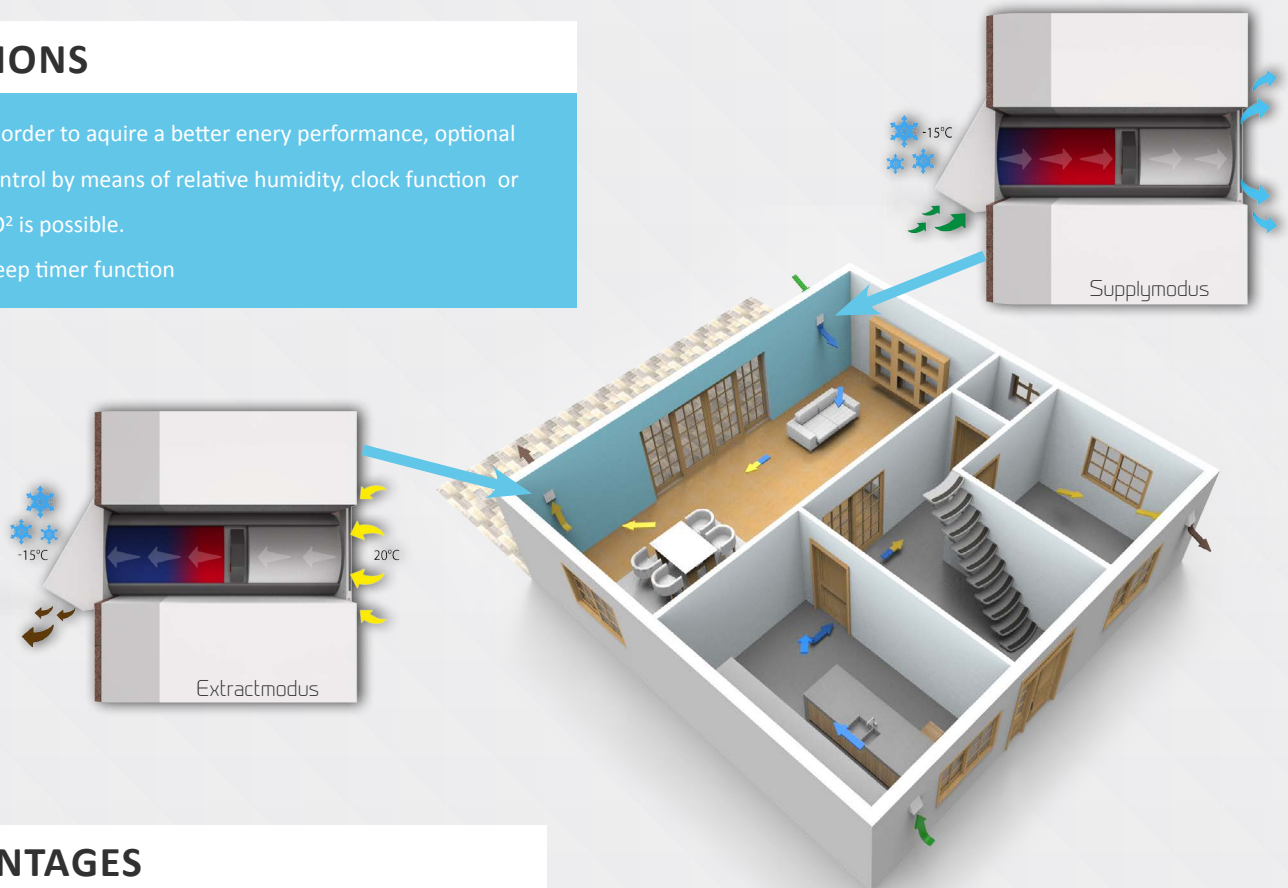
MANDATORY PRODUCTS

To obtain a fully functional ventilation unit, the following parts are required:

- Construction kit (500 or 1000mm)
- Final assembly kit (contains 1 pair of heat recovery units, filters and inner grill)
- Control panel
- Outside grill
- Optional: Hygrostat, clock function or CO² sensor

OPTIONS

- In order to acquire a better energy performance, optional control by means of relative humidity, clock function or CO² is possible.
- Sleep timer function



ADVANTAGES

- EPS wall duct DN200 with excellent noise and heat insulation and easy length adjustment
- Up to 6 Fox up units (3 pairs) can be connected to a control unit
- Multiple control options
- Regenerative hexagonal ceramic heat accumulator with humidity recovery
- 2 Filters, G2 outside / G3 inside
- Filter change without tools
- Removal of the heat exchanger for cleaning without tools
- Extremely smoothly running DC fan, vibration-free mounting
- Operating device with 3 power levels 13/23/35 m³/h
- Cooling down at night by means of air exchange without heat recovery
- The Fox Up is a perfect solution for both new build and renovation projects

TECHNICAL DATA

Volume flow of the fan	m ³ /h	13 / 23 / 35
Heat exchanger efficiency ¹	%	71,1
Power consumption ²	W	2.2 / 3.0 / 6.1
Noise pressure level ³	dB(A)	25/31/42
Filter class	outside / inside	G2 / G3
Wall duct dimensions	External diameter	DN 200
	Lenght	500 mm or 1000mm
Operating temperature		-20°C to +40°C
Voltage / frequency		230 V, 50 HZ
Weight	kg	5,5

¹ Airflow level 1 / 13 m³/h

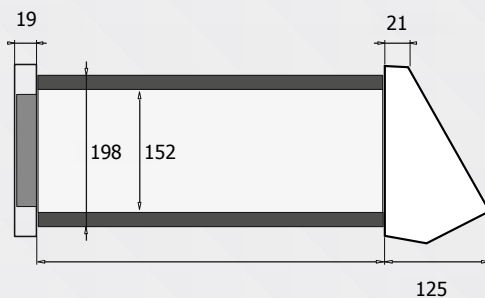
² Total Power consumption of 1 pair Fox Up (2 fans + electronic controller)

³ Sound pressure level of supply air (2 fans), according to NEN-EN-ISO3741:2010 and calculated according to noise pressure level from 1 metre distance.

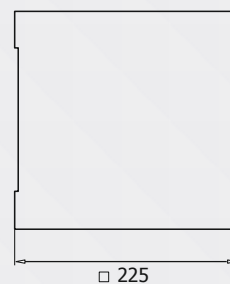
Fox Up			MC			CC			LDC		
			Manual			Clock			≥1 Sensors		
			One pair	Two pair	Three pair	One pair	Two pair	Three pair	One pair	Two pair	Three pair
SEC-class			B	B	B	B	B	B	A	A	A
Specific energy consumption	kWh/ (m ² .a)	Cold	-61,3	-61,5	-61,6	-62,9	-63,2	-63,3	-72,6	-72,5	-72,6
		Average	-31,5	-31,8	-31,9	-32,6	-32,8	-32,9	-38,7	-38,7	-38,7
		Warm	-11,8	-12,1	-12,2	-12,6	-12,8	-12,9	-16,7	-16,7	-16,7
Maximum flow rate @100Pa	m ³ /h		35	70	105	35	70	105	35	70	105
Sound power level	dB(A)		38	41	44	38	41	44	38	41	44

DIMENSIONS

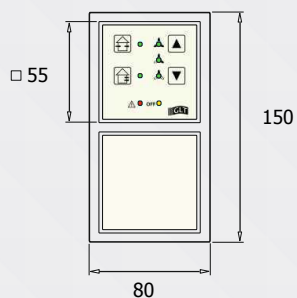
FAN UNIT



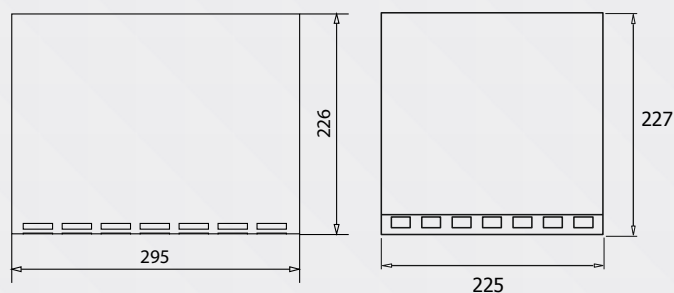
INNER COVER

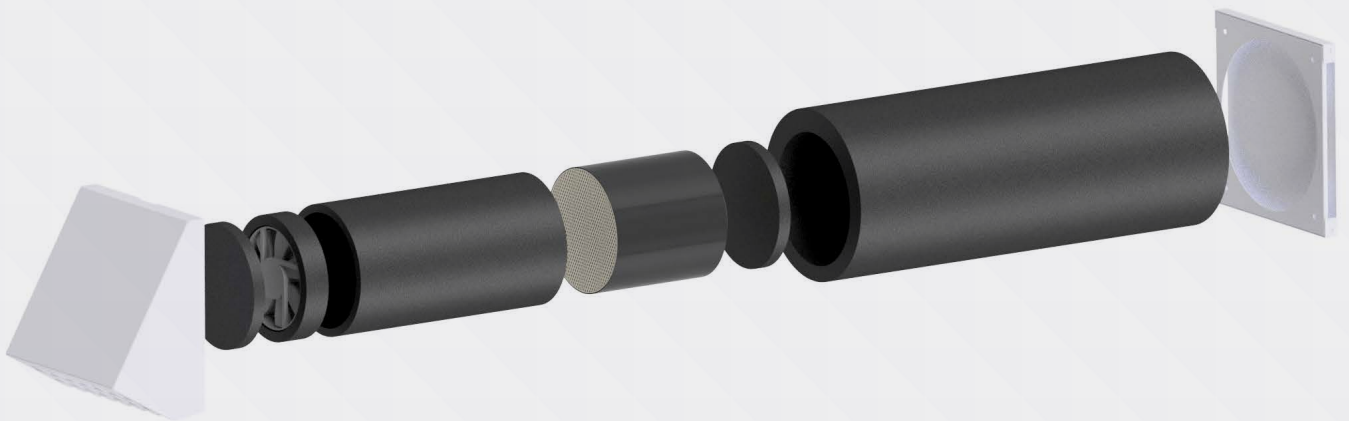


CONTROL ELECTRONICS



INNER COVERS





**Download all technical documents instantly from our website:
www.ventilairgroup.com**



GLT is a trademark of Ventilair Group

Ventilair Group Belgium

Kuurne | be@ventilairgroup.com | +32 (0)56 36 21 20

Ventilair Group The Netherlands

Eersel | nl@ventilairgroup.com | +31 (0)497 36 00 31

Ventilair Group France

Lille | fr@ventilairgroup.com | +33 (0)3 20 12 06 49